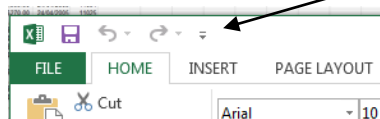


## Adding Items to the Quick Access Toolbar in Excel 2016

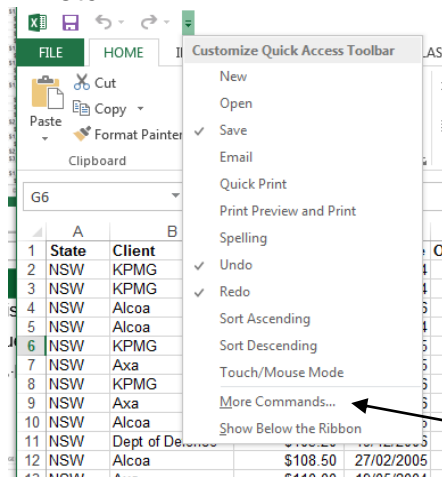
### Adding Items to the Quick Access Toolbar in Excel 2016

The quick access toolbar appears at the top left of the screen. By default it contains a Save icon, Undo and Redo icons.

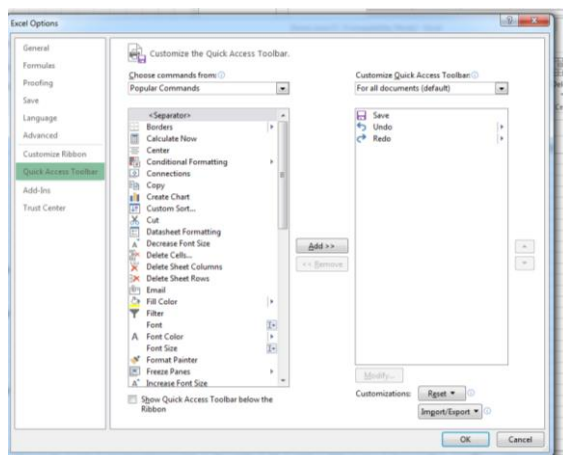
- You can easily customise it to your own preferences by clicking the drop arrow at the end of the toolbar.



- From here you can quickly add items such as Print Preview, Open, Email etc.



- If the shortcut you want isn't on the list, click More Commands to locate it.



- Choose desired shortcuts and click Add.

You can change the sequence by selecting an option and clicking the up or down arrows.

- Click OK to finalise the toolbar.